

Sands School



DISCIPLINE & EXCLUSIONS

The school prides itself on its common sense approach to daily life and from its inception in 1987 the use of petty rules and punishments has been avoided as much as possible and has been replaced by discussion, negotiation and conflict resolution.

However there is a disciplinary procedure that can, in extreme cases, lead to exclusion.

There is a list of rules that the School Meeting has designed and ratified. These are explained in the **Prospective Student Booklet**. Breaking these rules can lead to a number of consequences:-

- (a) Situation handled by class group and teacher if problem occurs in class.
- (b) Academic tutor involved.
- (c) School Council delegated to investigate the problem further and discuss all issues involved, talk to parties concerned and try to resolve problem in negotiation with the above.
- (d) If infraction is serious enough e.g. on-going bullying, the School Council and make proposals to the School Meeting or hand over the problem to the Meeting to decide a punishment or outcome.
- (e) At stage (c) and (d) the child's tutor will be involved as an advocate and intermediary (it doesn't follow that parents will automatically be involved at this stage).
- (f) It is possible that the Meeting will choose to avoid any punishment if the perpetrator can prove that they have gained enough insight so that the situation will not repeat. It is equally likely that some action will be proposed, but only in extreme cases would a temporary exclusion be used.

(However, for breaking the smoking rule, there is an automatic one day exclusion.)

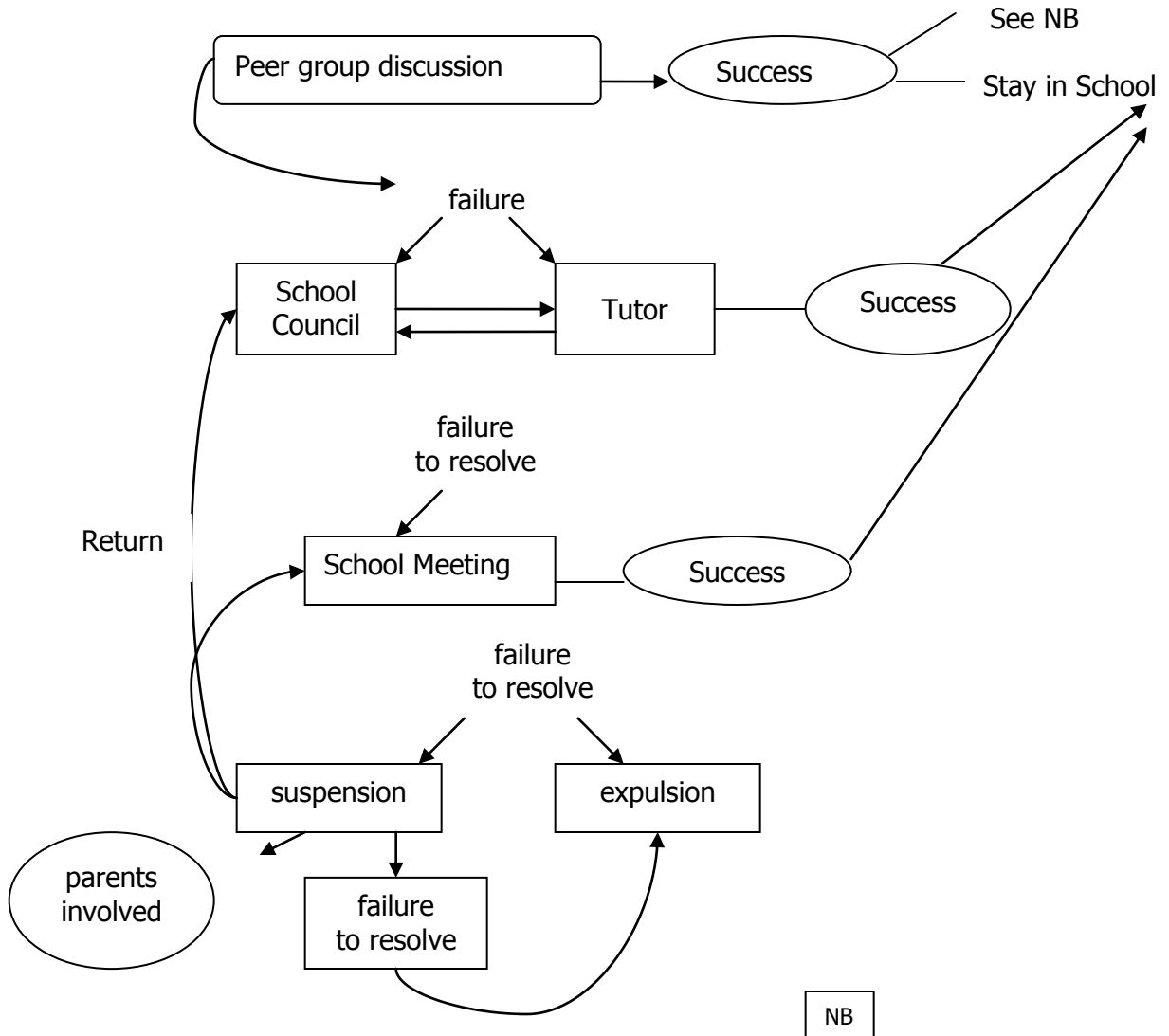
- (g) When the drug or alcohol rules are broken then there is an automatic one week suspension during which the child will meet with their tutor and parents to discuss the offence and build a case for re-inclusion. Usually this process is instrumental in preventing further infractions.

On return, community service is often demanded by the School Meeting.

- (h) Subsequent abuse of the drug, alcohol or bullying rules would eventually lead to further exclusions and / or expulsion.
- (i) Expulsion requires a week long process:-
 - (a) proposal to school meeting by individual or group
 - (b) vote by Meeting to approve or reject proposal
 - (c) If approved, then parents informed, child sent home and week spent in negotiation with child, parents and tutor.
 - (d) School Meeting called to discuss ratifying the expulsion or to find an alternative that allows child to remain in school.

The disciplinary procedure can go through some or all of these stages attempting at each to resolve through non-punitive measures where possible.

A record will be kept of all exclusions and expulsions and will be reported to the Governors.



NB

Success and Return could include a host of additional consequences from community service, regular tutorials, exclusion from certain classes or just lots of discussion and attempt to give individual insight into their behaviour.

Flow Chart

Policy log

Last reviewed	September 2016
Agreed by	Donald, Nathan, staff meeting
Review frequency	Annual
Comments	
Links	Prospective Student Booklet